

Apartments Features

Vitrified Tiles Flooring
Good Finish on Walls and Ceiling
Acrylic plastic Paints on wall and Ceiling
Wooden Door Frame with Flush Doors (Internal)
Aluminum Fittings Door and Windows (External)
Well Ventilated Rooms & Hall with Ample Natural Light

Entertainment Facilities

Club House
Gymnasium
Kids Play Area
Well designed Landscaped Garden



Security System

24*7 Security
EPABX / Intercom System
CCTV Camera (Parking Area / Public Area)



Kitchen

Granite platform
S.S. Sink
2' dado Tiles above Platform Area
Exhaust Fan, Geyser and water Purifier Points



Electrical

Protective M.C.B'S.
Telephone & TV outlets
Provision for adequate light and power points
Fire Resistance Wiring in P.V.C concealed conduit



Bathroom

Anti Skid Ceramic Tiles on the Floor
Designer Ceramic Tiles up to 7' height on Walls
Premium CP Fittings
Exhaust Fan & Geyser Point



Location Map



PROJECT BY:



Ishaan Infraestates India (P) Ltd.

Site Off : Ishaan Ashok Residences, Karnibagh, Near Deoghar Public School, Deoghar, Jharkhand

Website : www.ishaangroup.com | E-mail : info@ishaangroup.com

Phone : 09386648508, 09650500126



*Live Your
Dream Home*

ISHAAN
ashok residences
2 & 3 BHK APARTMENTS, DEOGHAR

Welcome to the world of i-Homes

Features

experience
European
life style with
luxury and comfort

Grand Entrance Gate • Water bodies with Green Park • Kids Play Area • Health Club • 24x7 Security • Convenient Shops
• Under-ground Cabling System • Efficient Power Back-up
• High Speed Lift in Each Tower • Earthquake resistant structure



Elevation



REAL ESTATES | HOTELS | IT | RETAIL

Site Layout



Unit Type - 1



Super Area - 940 Sq.Ft.

Drawing / Dining
2 Bedroom
Toilet
Kitchen
Balcony

Disclaimer: Drawings are conceptual and not to scale and are subject to change. Area might vary on preparation of final drawing or finalization by competent authority.

Disclaimer note: Visual representation shown in this brochure are purely conceptual and not a legal offering. All building plan, Specification layout plan etc. are tentative and subject to variation and modification by the company or the competent authority.

Unit Type - 2

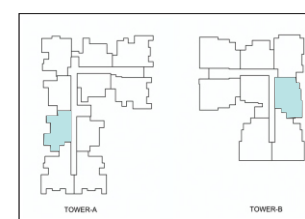


Super Area - 1195 Sq.Ft.

Drawing / Dining
2 Bedroom
2 Toilet
Kitchen
Balcony



Unit Type - 3



Super Area - 1325 Sq.Ft.

Drawing / Dining
2 Bedroom
2 Toilet
Study Room
Kitchen
Balcony

Disclaimer: Drawings are conceptual and not to scale and are subject to change. Area might vary on preparation of final drawing or finalization by competent authority.

Disclaimer note: Visual representation shown in this brochure are purely conceptual and not a legal offering. All building plan, Specification layout plan etc. are tentative and subject to variation and modification by the company or the competent authority.

Unit Type - 4

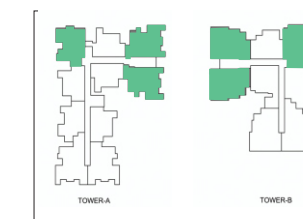


Super Area - 1325 Sq.Ft.

Drawing / Dining
2 Bedroom
2 Toilet
Study Room
Kitchen Balcony



Unit Type - 5



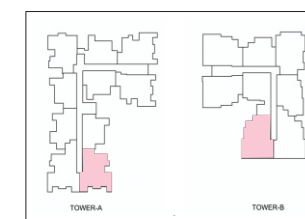
Super Area - 1625 Sq.Ft.

Drawing / Dining
3 Bedroom
2 Toilet
Kitchen
Puja Room
Balcony

Disclaimer: Drawings are conceptual and not to scale and are subject to change. Area might vary on preparation of final drawing or finalization by competent authority.

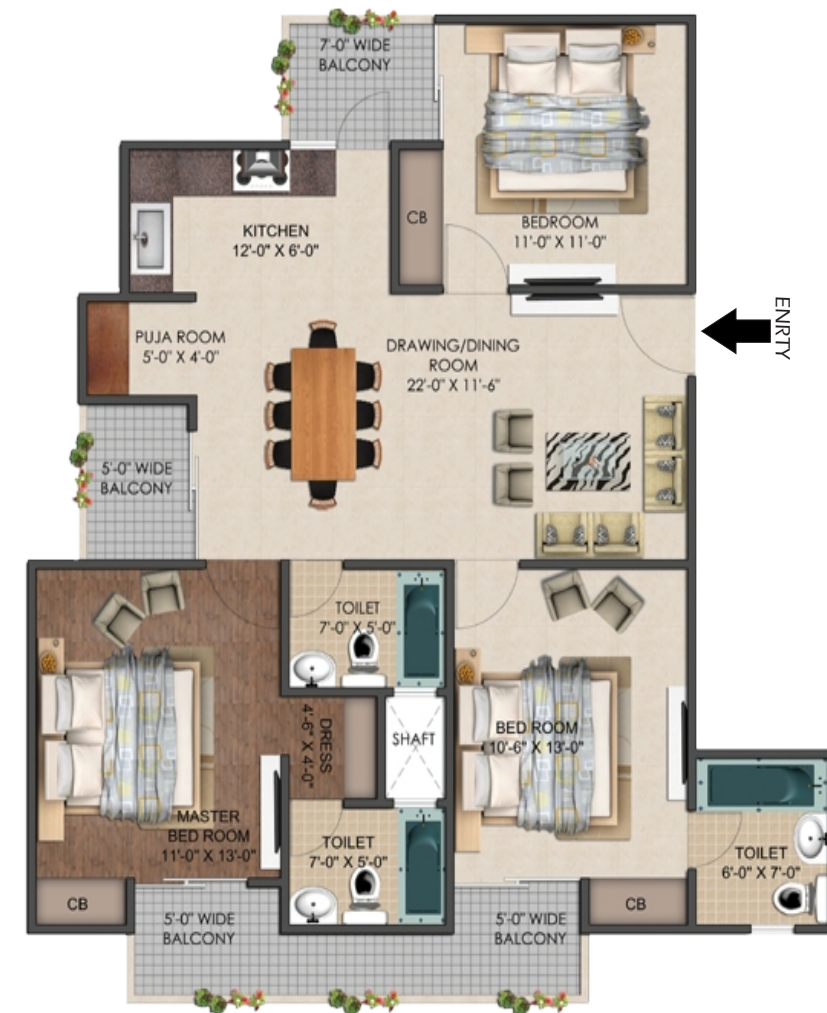
Disclaimer note: Visual representation shown in this brochure are purely conceptual and not a legal offering. All building plan, Specification layout plan etc. are tentative and subject to variation and modification by the company or the competent authority.

Unit Type - 6



Super Area - 1725 Sq.Ft.

Drawing Dining
3 Bedroom
3 Toilet
Kitchen
Puja Room
Balcony



Unit Type - 7



Super Area - 1850 Sq.Ft.

Drawing / Dining
3 Bedroom
4 Toilet
Servant Room
Kitchen
Puja room
Balcony

Disclaimer: Drawings are conceptual and not to scale and are subject to change. Area might vary on preparation of final drawing or finalization by competent authority.

Disclaimer note: Visual representation shown in this brochure are purely conceptual and not a legal offering. All building plan, Specification layout plan etc. are tentative and subject to variation and modification by the company or the competent authority.